



FOSHAN HK BUILDING MATERIAL COMPANY

stair catalog

One-stop solution for your Self-built houses or construction projects

Save your time, Save your cost!



Our factory can produce :

Aluminum Windows



Aluminum Doors



Steel door



Louvers



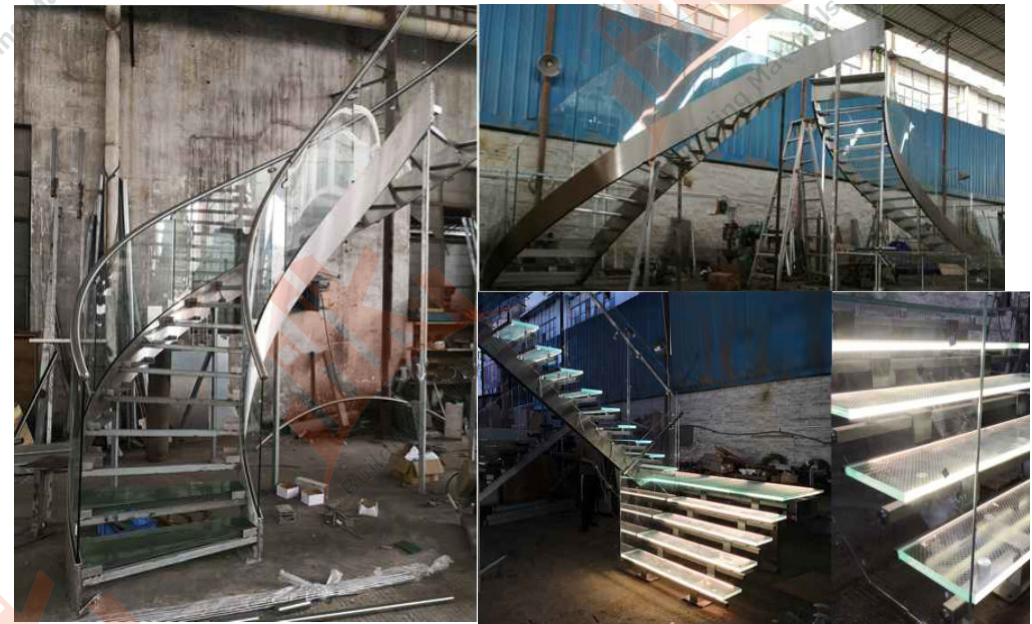
Corten steel doors



Gate & fence

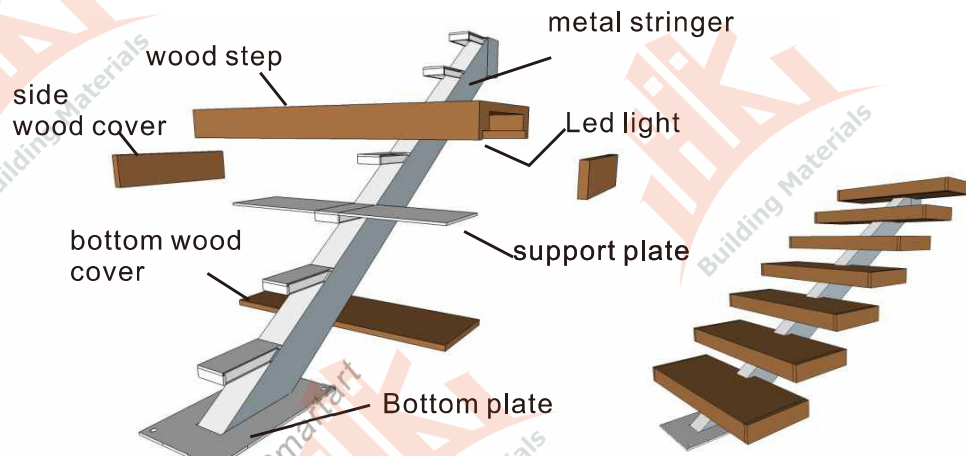


13 years export experience





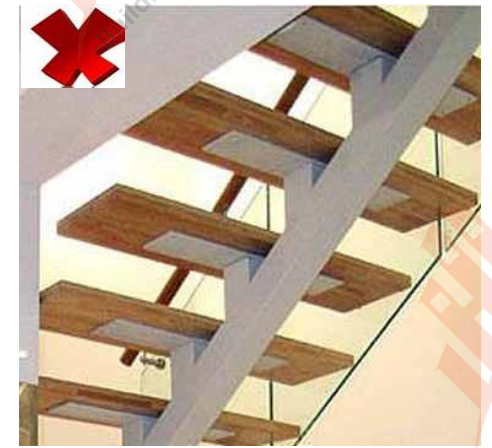
Latest
Patent product



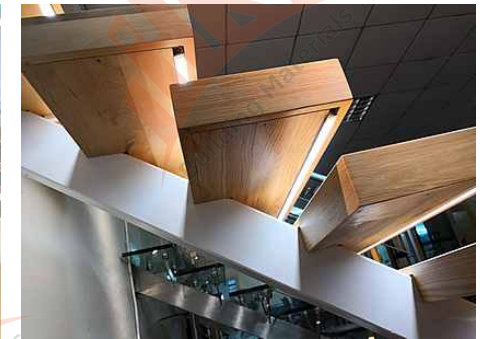
New design

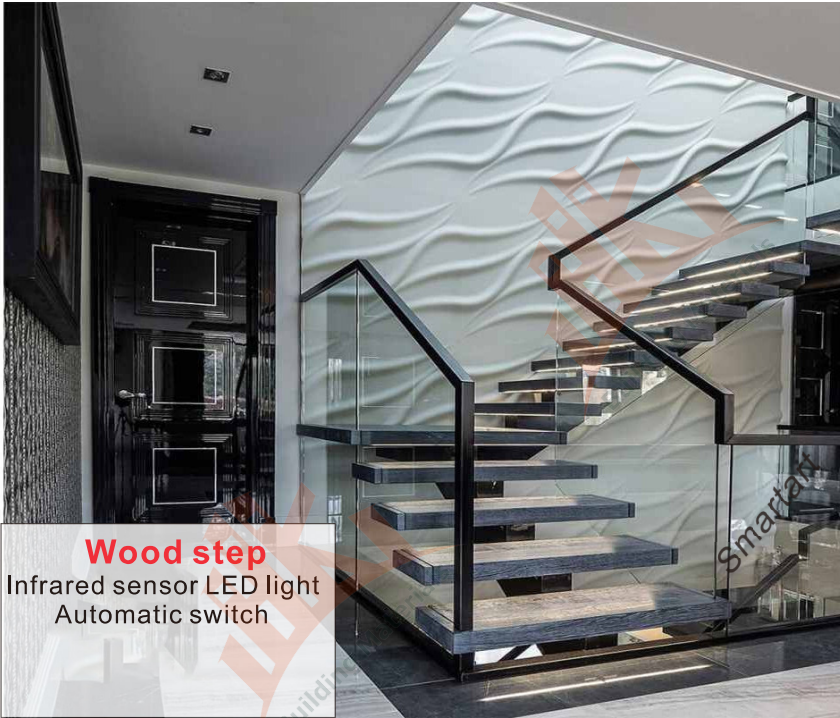
VS

Old design



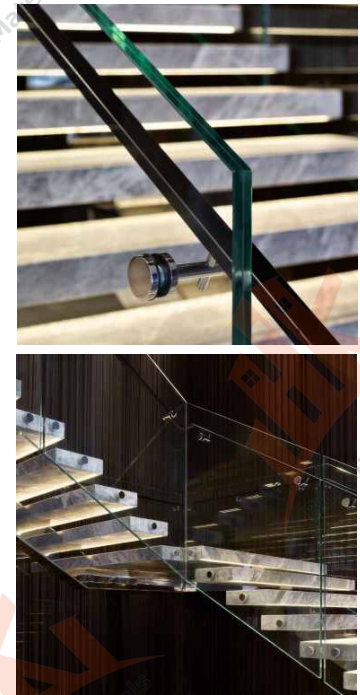
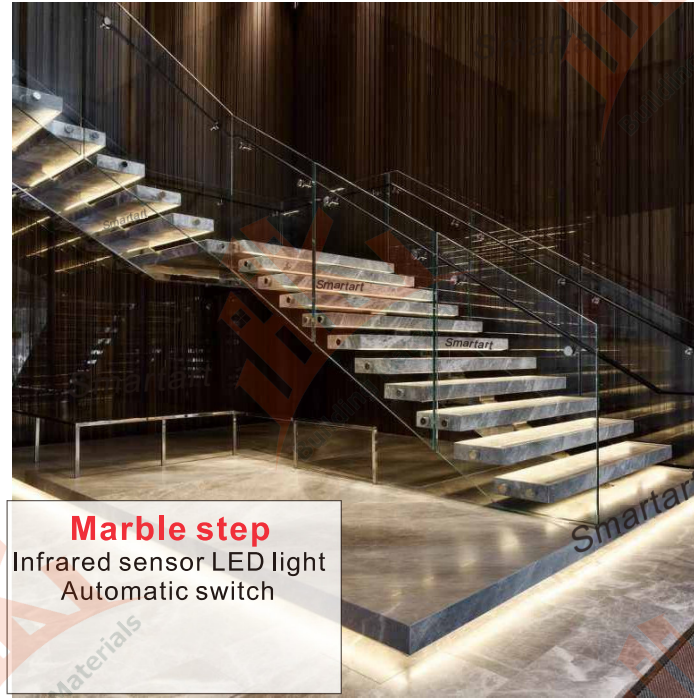
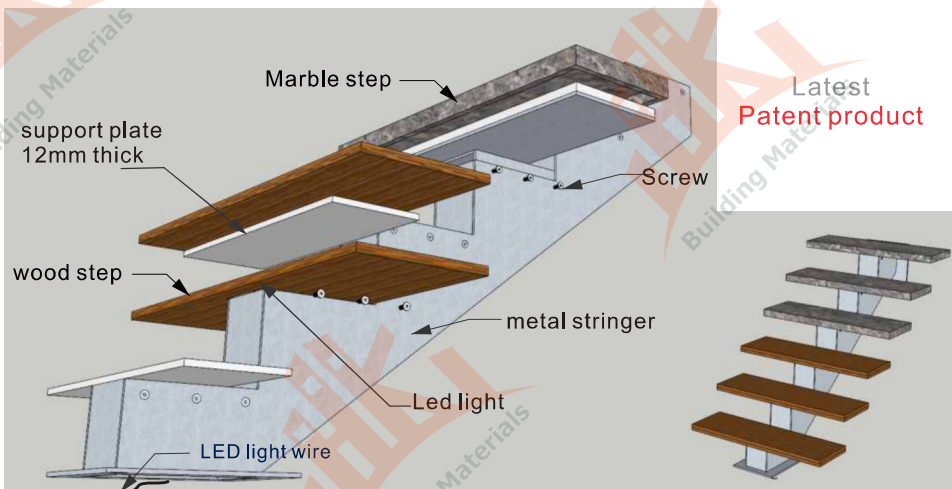
New design with no support at the bottom.





Advantages

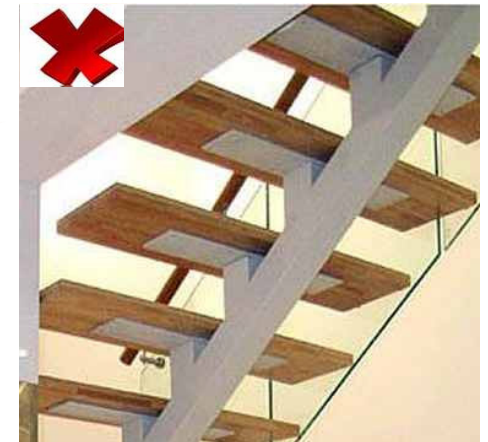
- 1: Product is more stable, thicker steel plate.
- 2: Dimensions are accurate and meet strict building standards inspection.
- 3: The exterior design of the product is more simple, you can't see the extra support steel plate, with intelligent LED lights



Frameless + Led light

VS

Old design



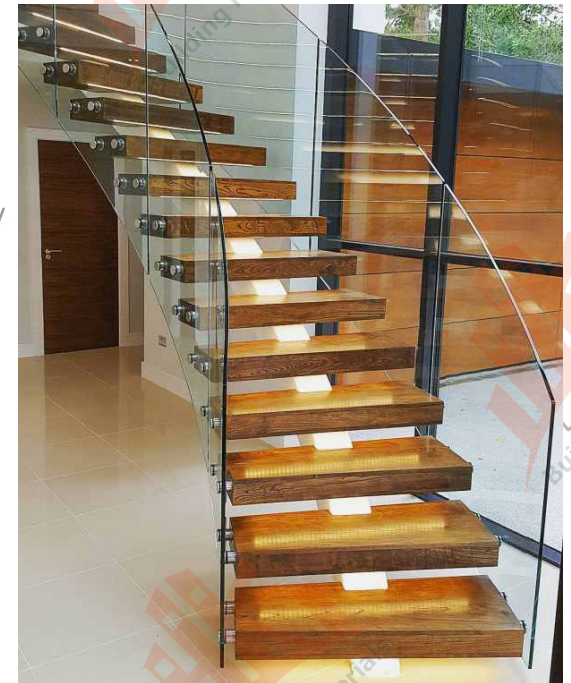
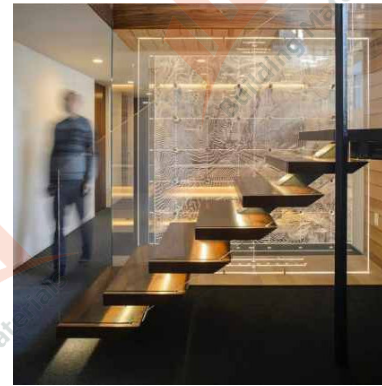
Single stringer wood+ steel stairs:

Component	Specification	Material	Finish
stringer	100*100*4.0mm /150*100mm square tube	A3 Steel/SS304	powder coated/satin
tread	80-100mm thick wood box	solid wood/clear	Painting/clear
handrail	Ø 50.8×1.5mm/ or square tube	stainless steel /solid wood	satin/mirror/varnished



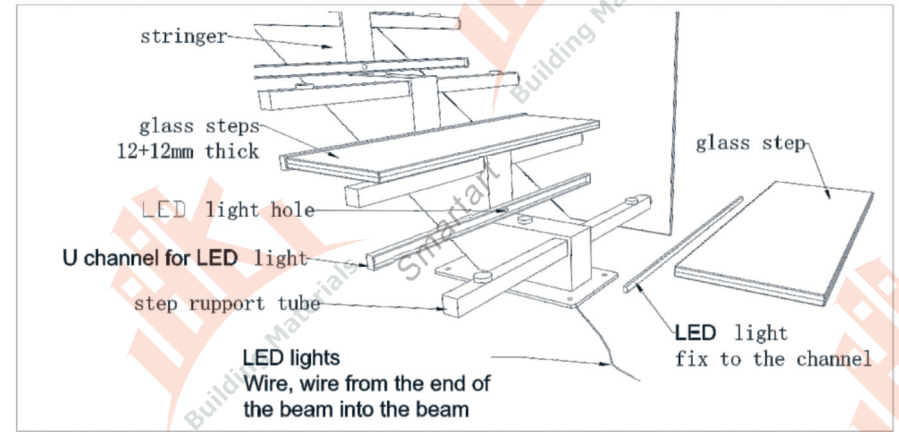
Led light step

- ▶▶ Concise fashion
- ▶▶ Strong and durable
- ▶▶ Automatic human body sensing light





Structure detail :



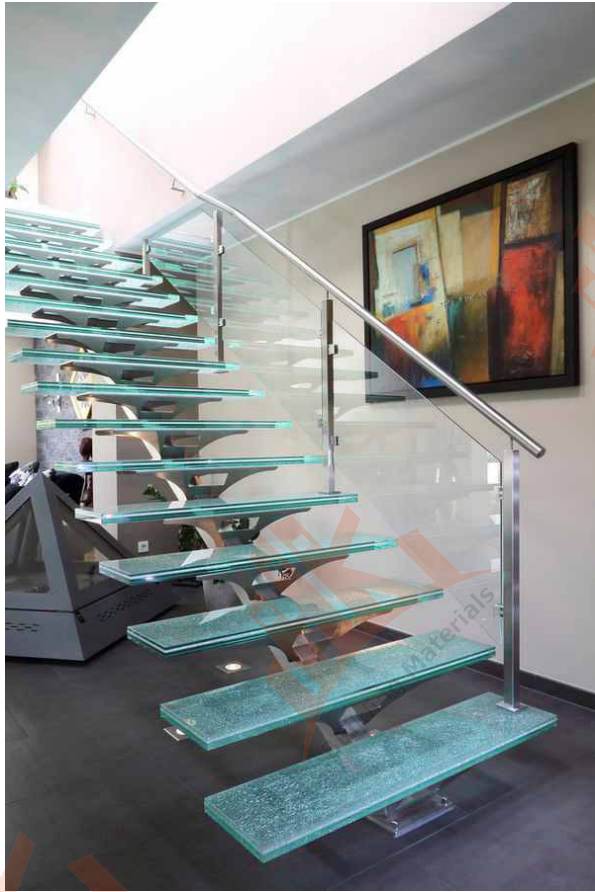
Infrared sensor LED light,
Automatic switch.



Single stringer stairs with LED glass step

Component	Specification	Material	Finish
stringer	100*100*4.0mm /150*100mm square tube	A3 Steel/SS304	powder coated/satin
tread	38/50mm thick wood 12+1.5mmpvb+12mm tempered glass	solid wood/clear tempered glass	Painting/clear
handrail	Ø 50.8×1.5mm/ or square tube	stainless steel /solid wood	satin/mirror/varnished





Mono Stringer Stair

Our mono or single stringer stair kits are constructed of heavy gauge steel with a durable powder coated finish.

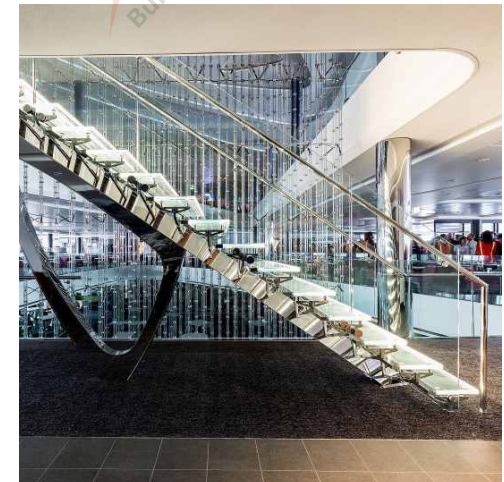
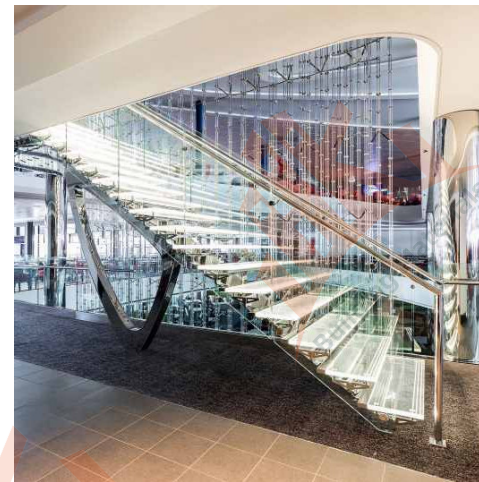
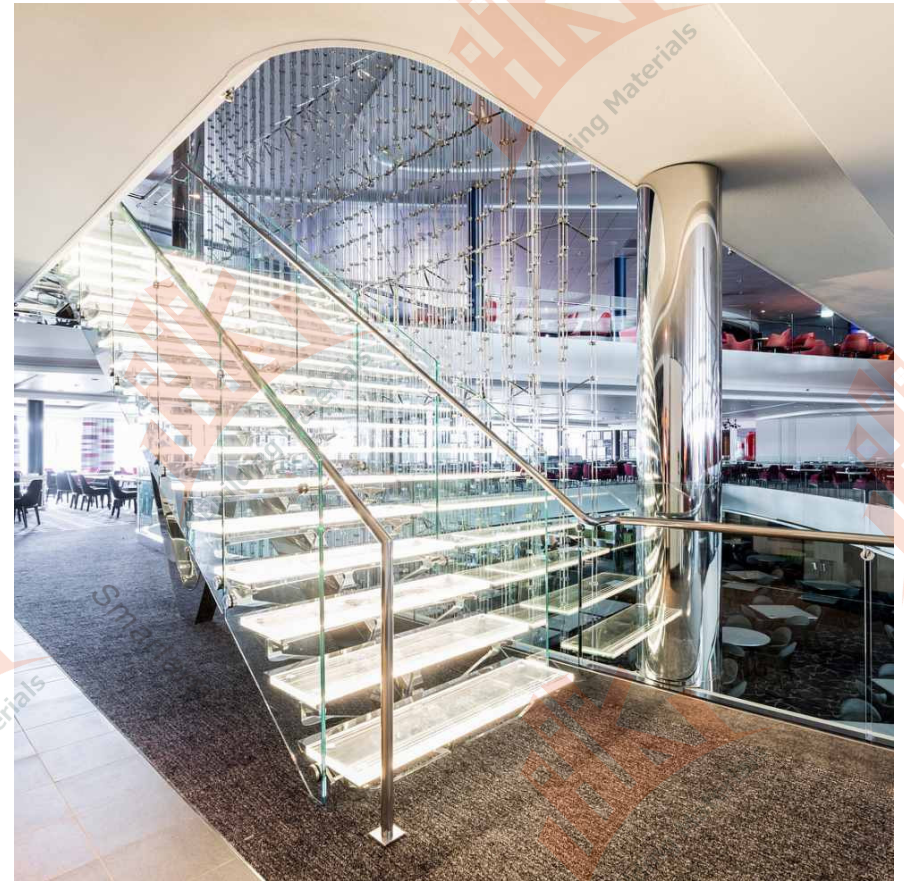
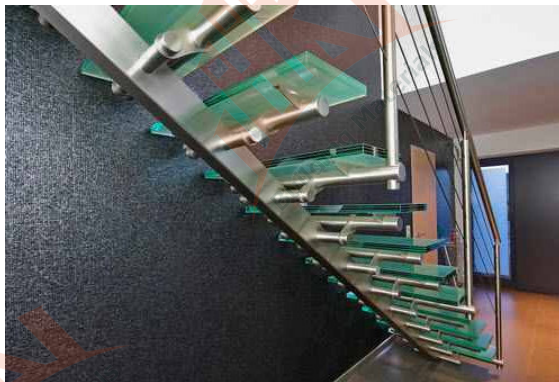
All of our single stringer and other metal stair kits are designed for easy assembly and installation for both the professional contractor or the DIY homeowner. No special tools are required!

Modern single stringer design

Standard sizes:
8ft (2438mm),
10ft (3048mm),
12ft (3658mm).

Heavy duty steel construction

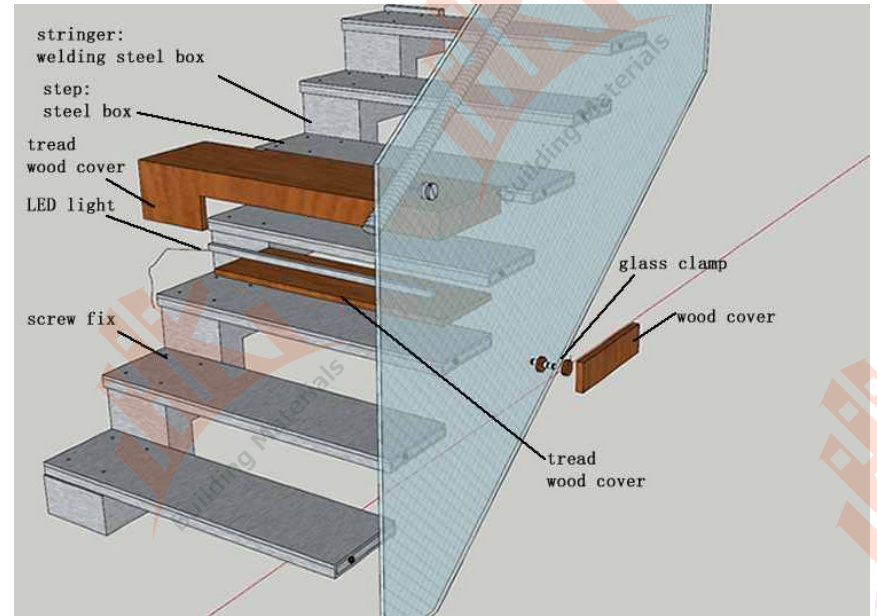
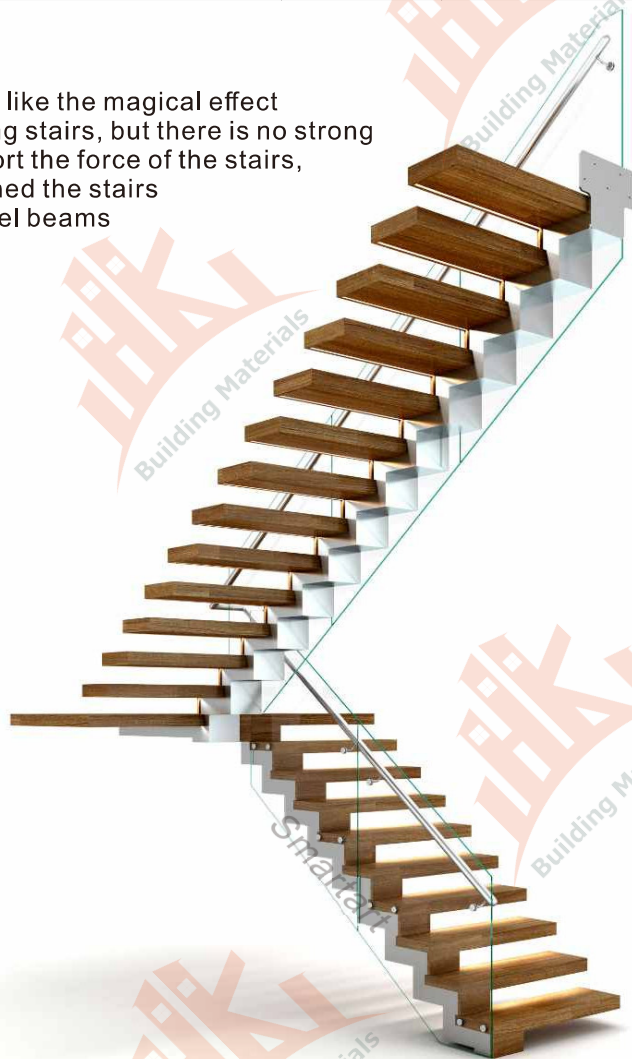
Durable powder coated finish



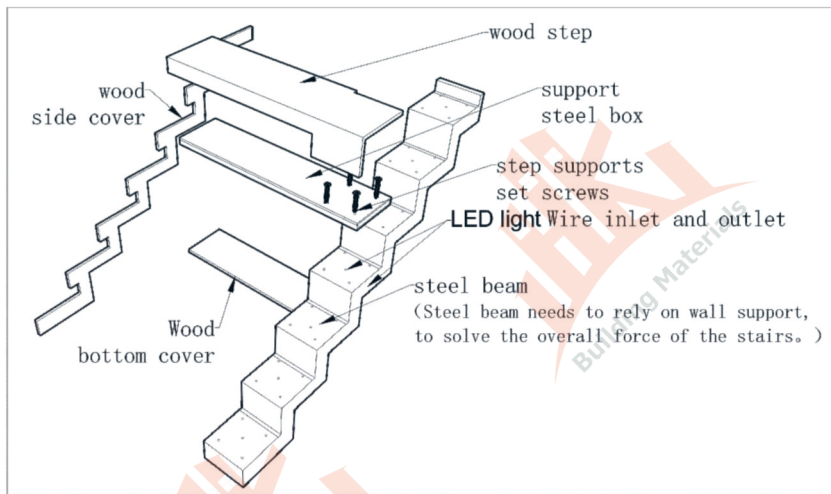
Wood Floating Stairs:

Component	Specification	Material	Finish
stringer	8mm thick welding steel	A3 Steel/SS304	powder coated/satin
tread	80-100 mm thick wood	solid wood/clear	Painting/clear
handrail	Ø 50.8×1.5mm/ or square tube	stainless steel /solid wood	satin/mirror/varnished

Many clients like the magical effect of the floating stairs, but there is no strong wall to support the force of the stairs, so we designed the stairs with side steel beams

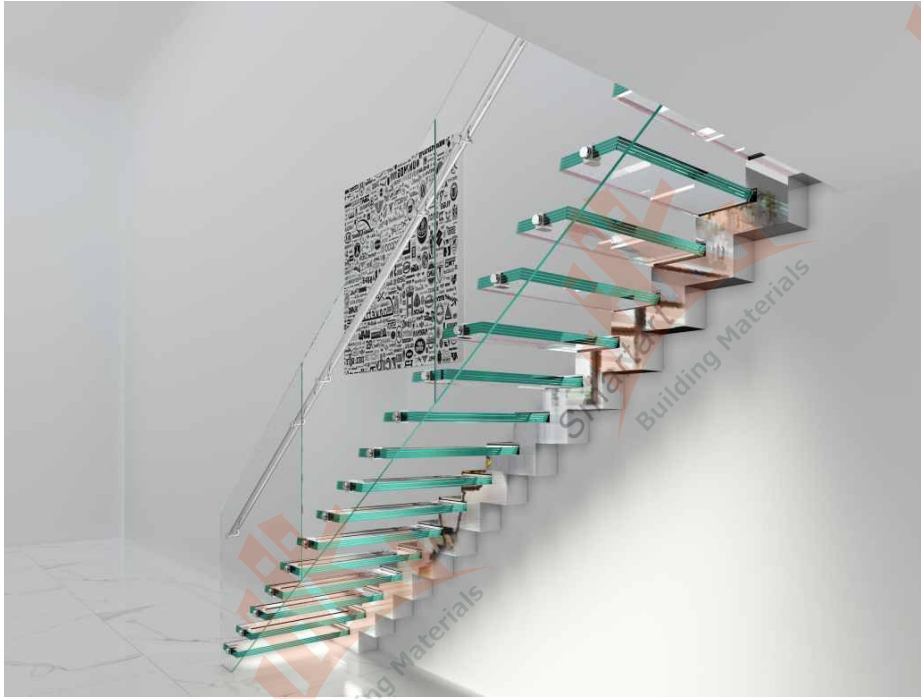


Structure detail:



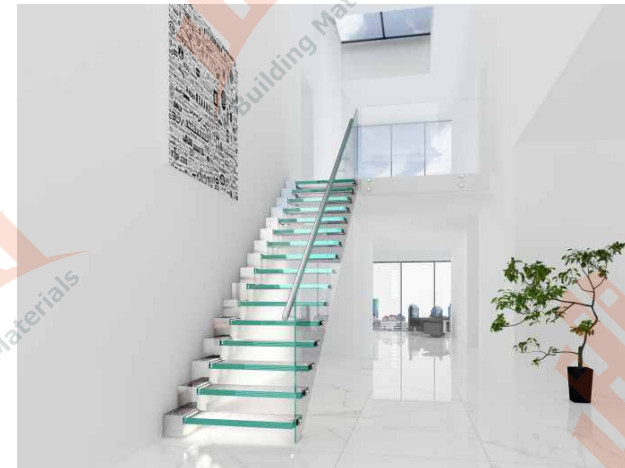
Floating stairs + LED lights



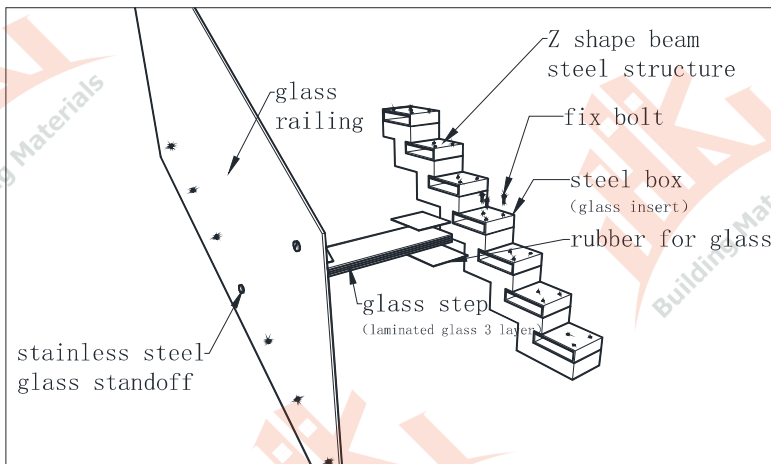


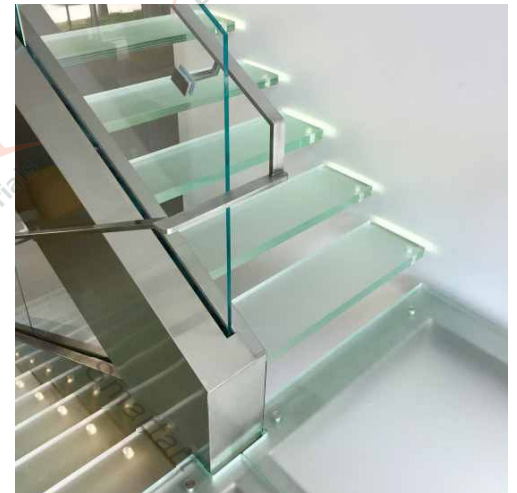
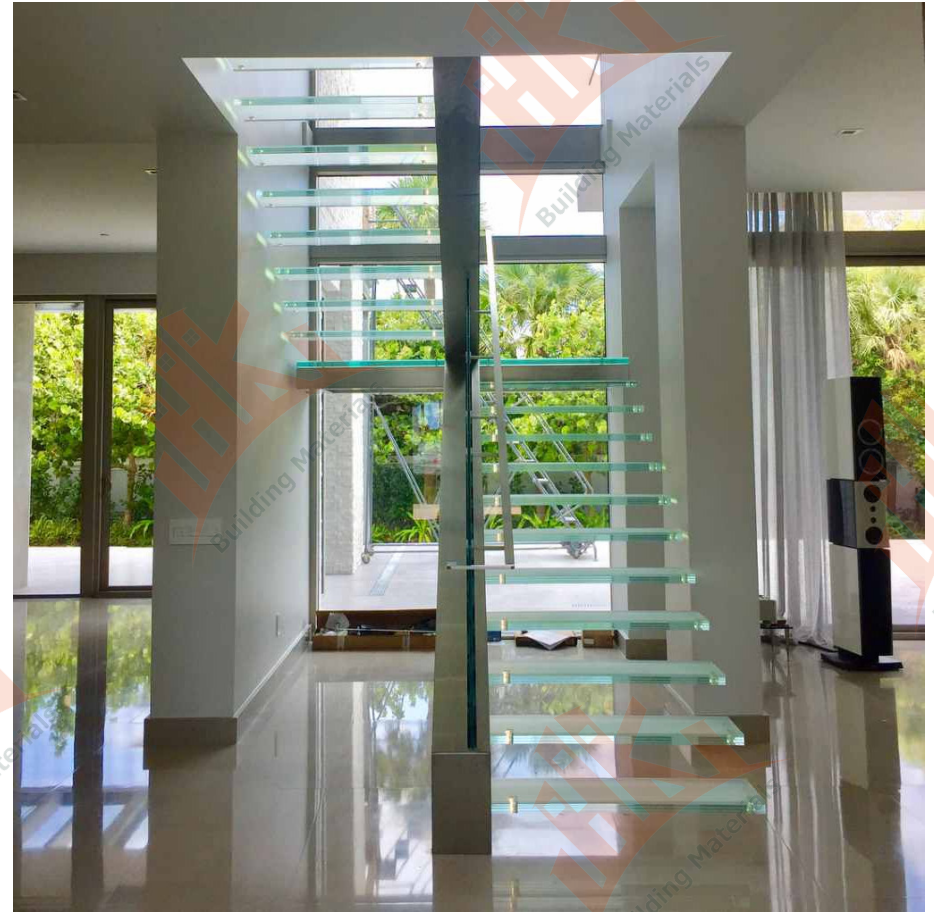
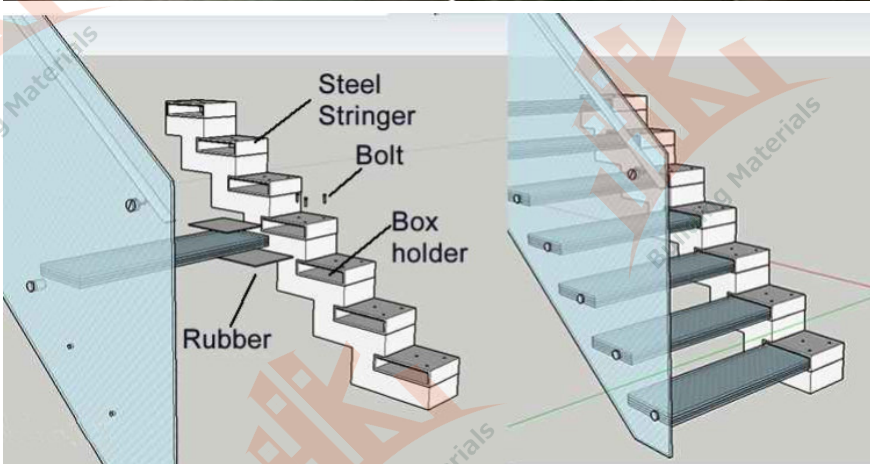
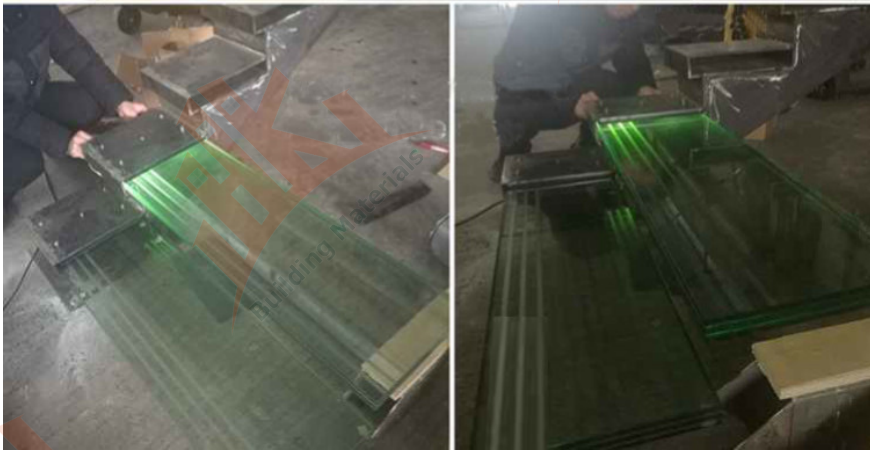
Floating stairs + glass step:

Component	Specification	Material	Finish
stringer	100*200*4.0mm /150*100mm square tube	A3 Steel/SS304	powder coated/satin
tread	12+1.5mmpvb+12mm tempered glass	solid wood/clear tempered glass	Painting/clear
handrail	Ø 50.8×1.5mm/ or square tube	stainless steel /solid wood	satin/mirror/varnished



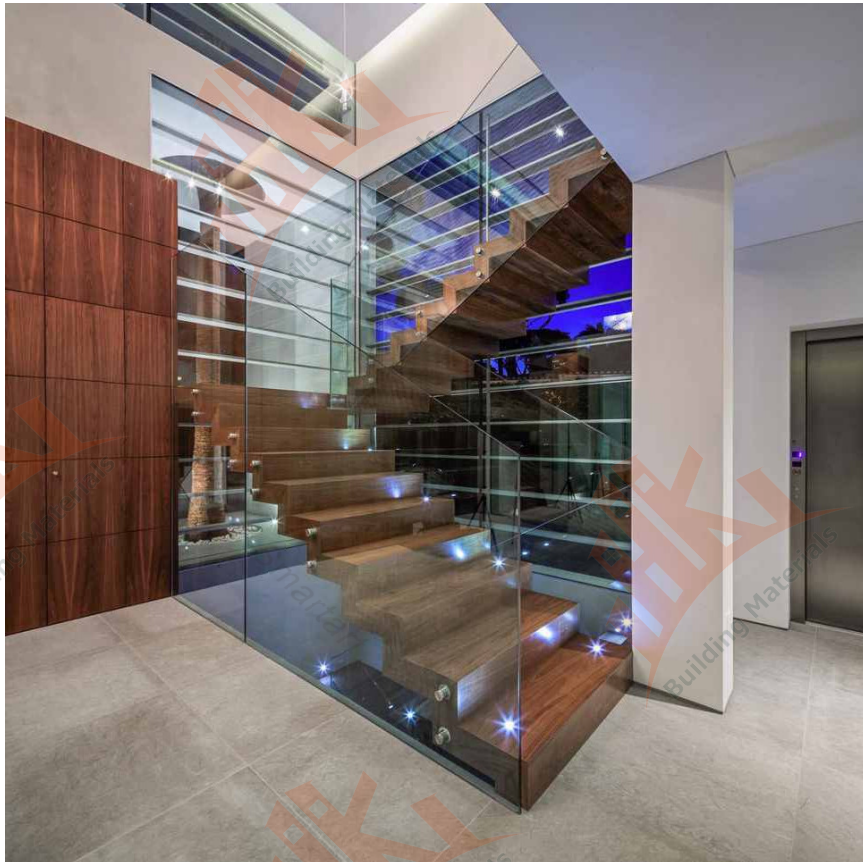
Structure detail:

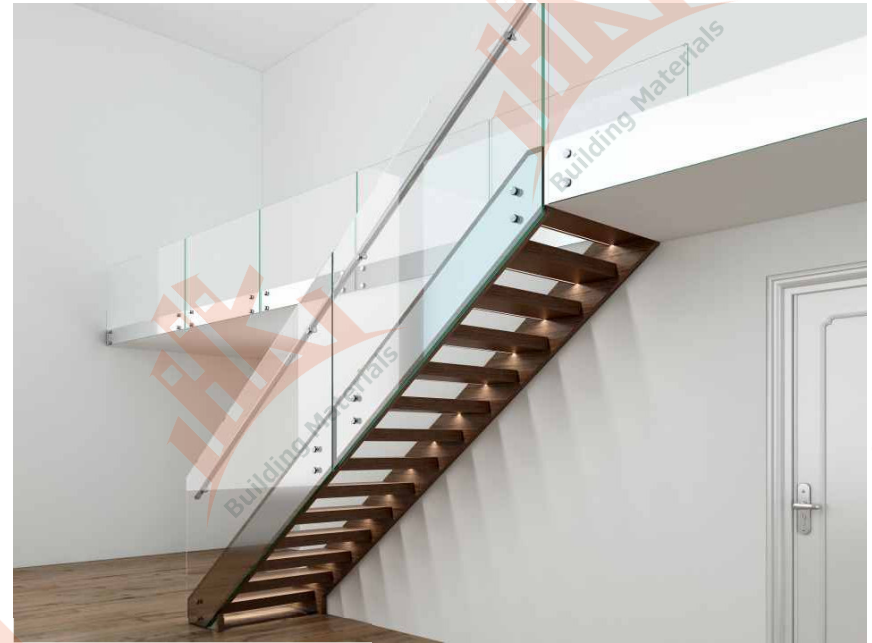
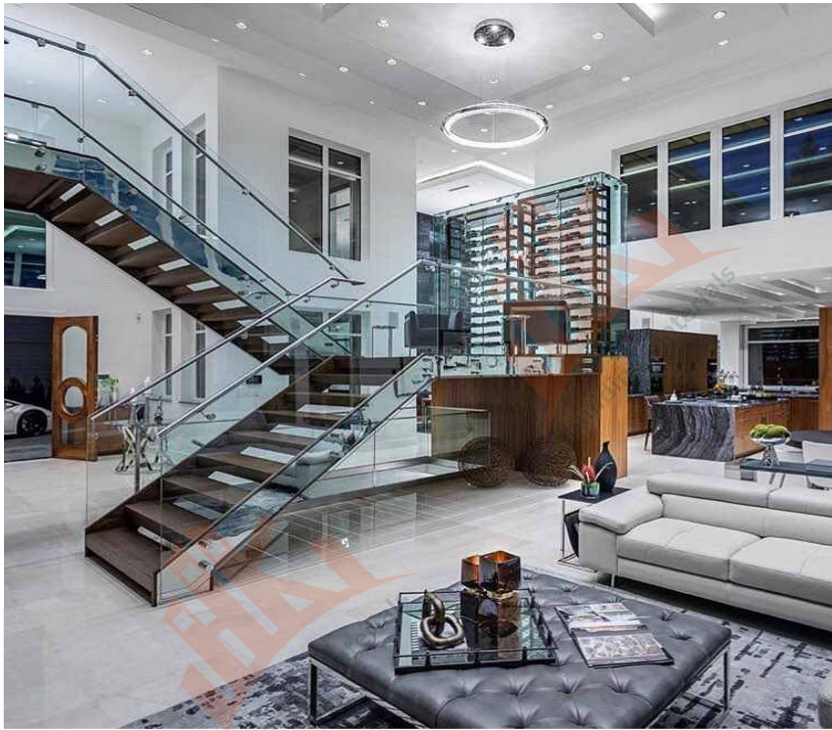




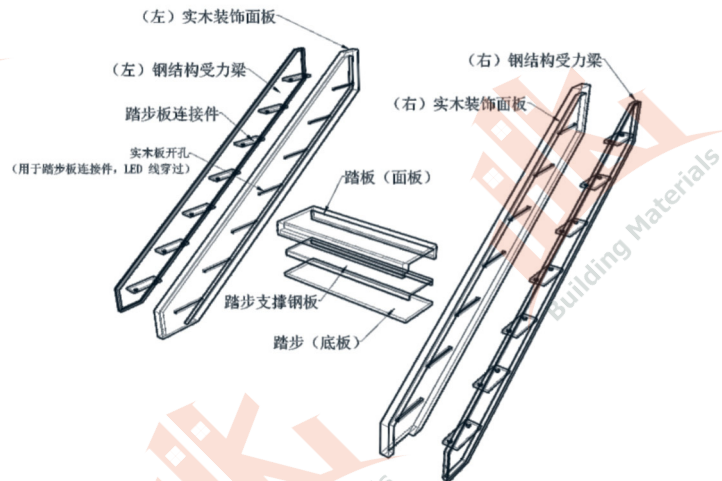
Single stringer wood+ steel stairs:

Component	Specification	Material	Finish
stringer	100*100*4.0mm /150*100mm square tube	A3 Steel/SS304	powder coated/satin
tread	38/50mm thick wood 12+1.5mmpvb+12mm tempered glass	solid wood/clear tempered glass	Painting/clear
handrail	Ø 50.8×1.5mm/ or square tube	stainless steel /solid wood	satin/mirror/varnished

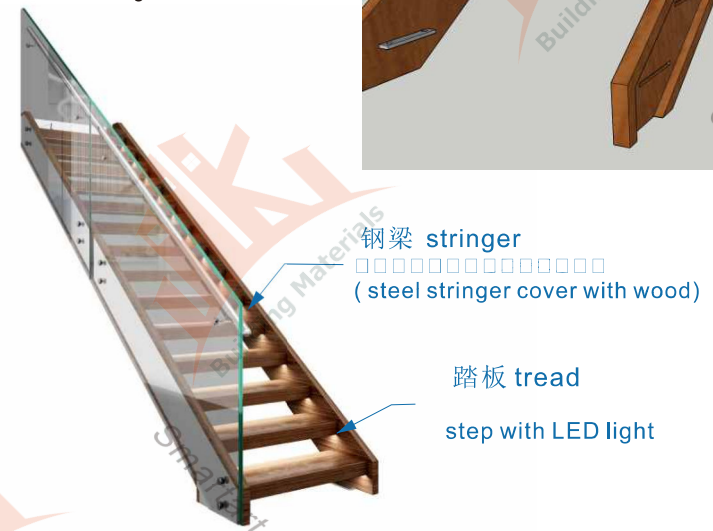




结构说明图:

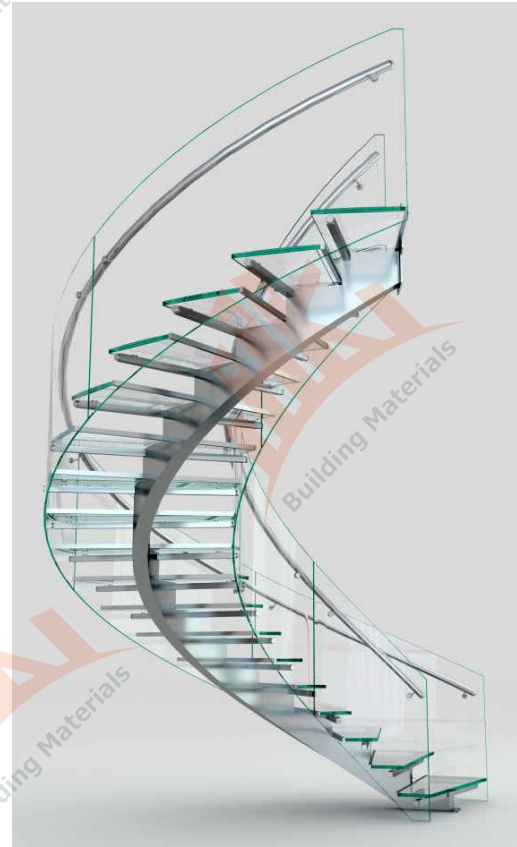


The special place of this stair is to wrap up the traditional steel structure stair with wooden board, which not only ensures the overall force of the stair, but also strengthens the appearance of the beautiful, and the effect of LED lights makes the product rich in a higher level.

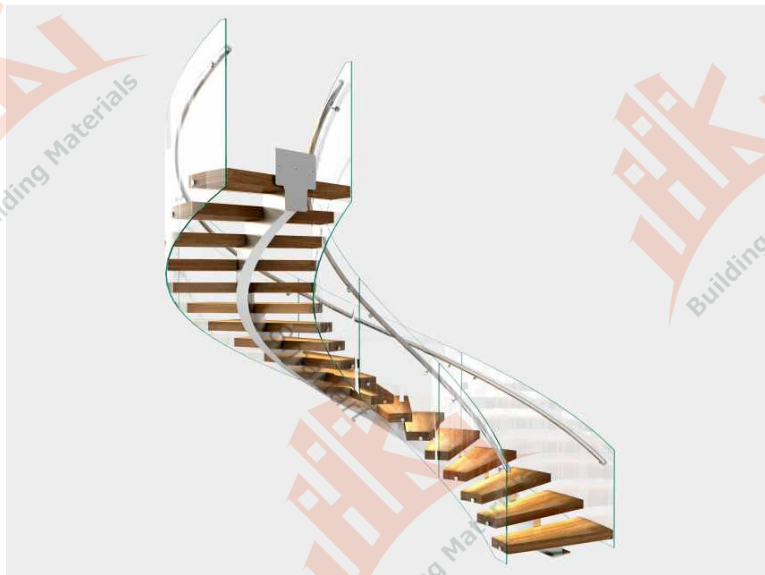


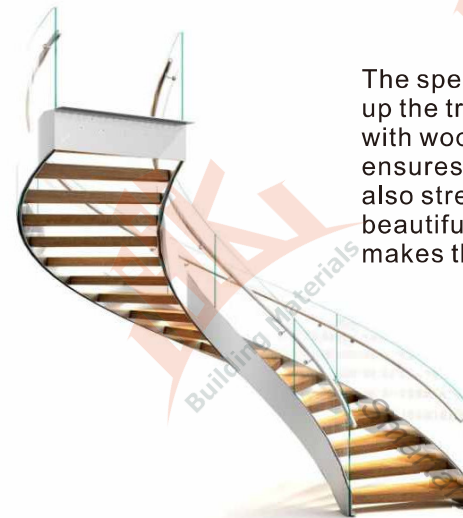


The arc stair of single beam and the perfect combination of wood step and arc glass, add lamplight to let the warmth of room side more.

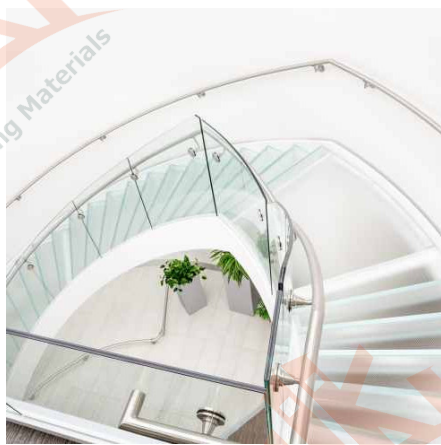
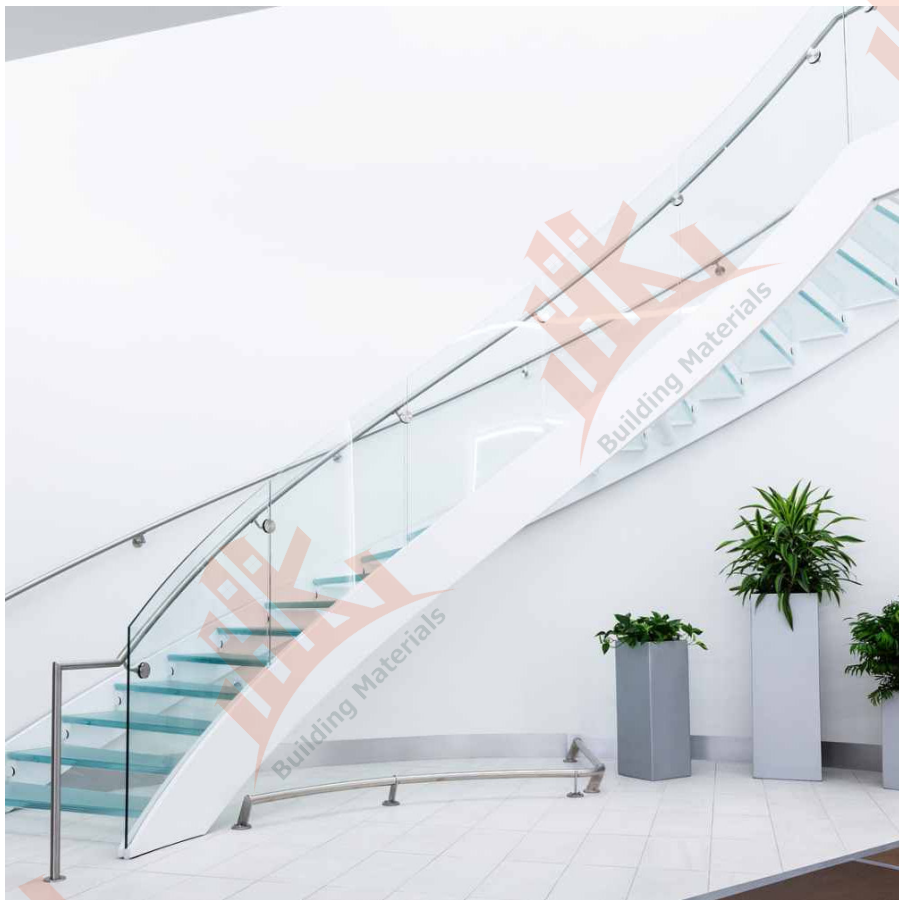


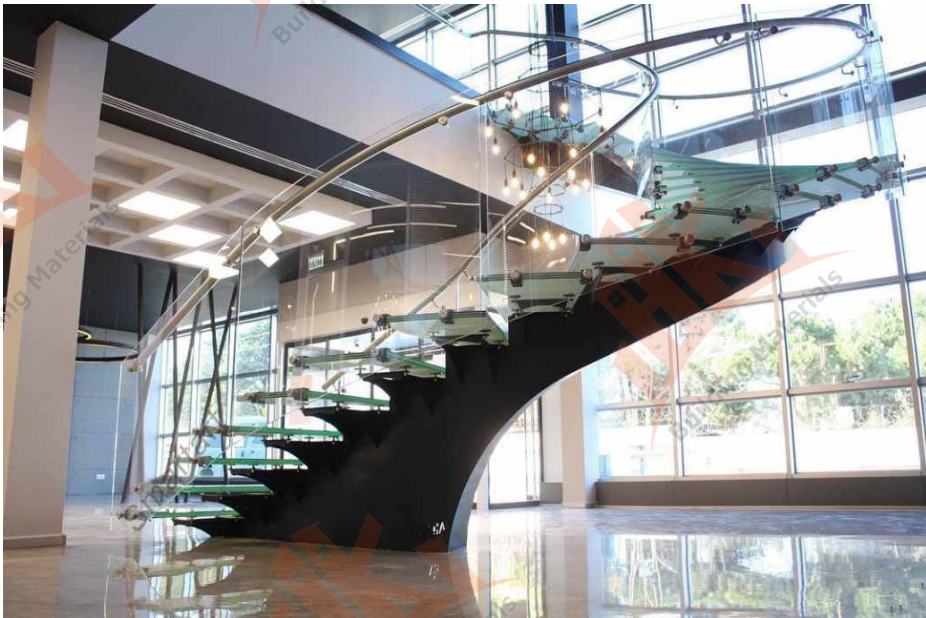
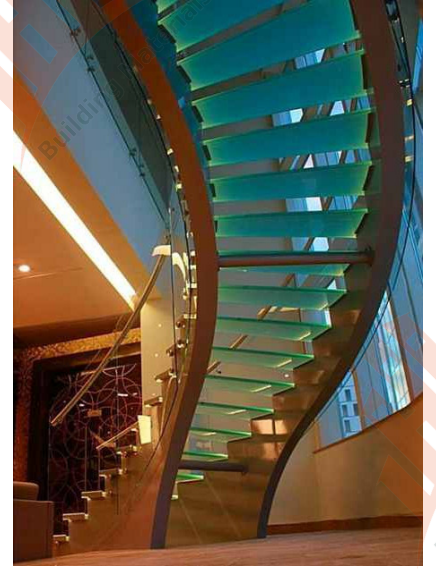
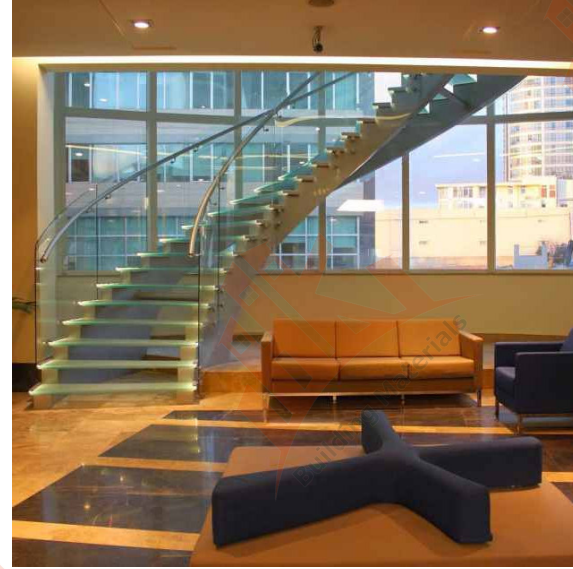
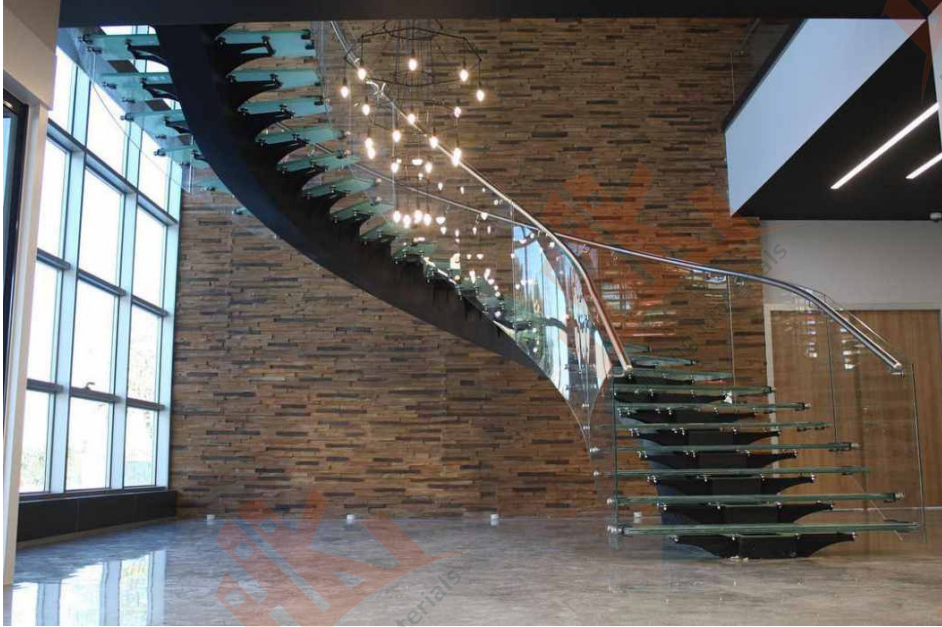
The perfect combination of the arc stair of single beam and arc glass, add lamplight to make the side of the room more fashionable, have contemporary feeling

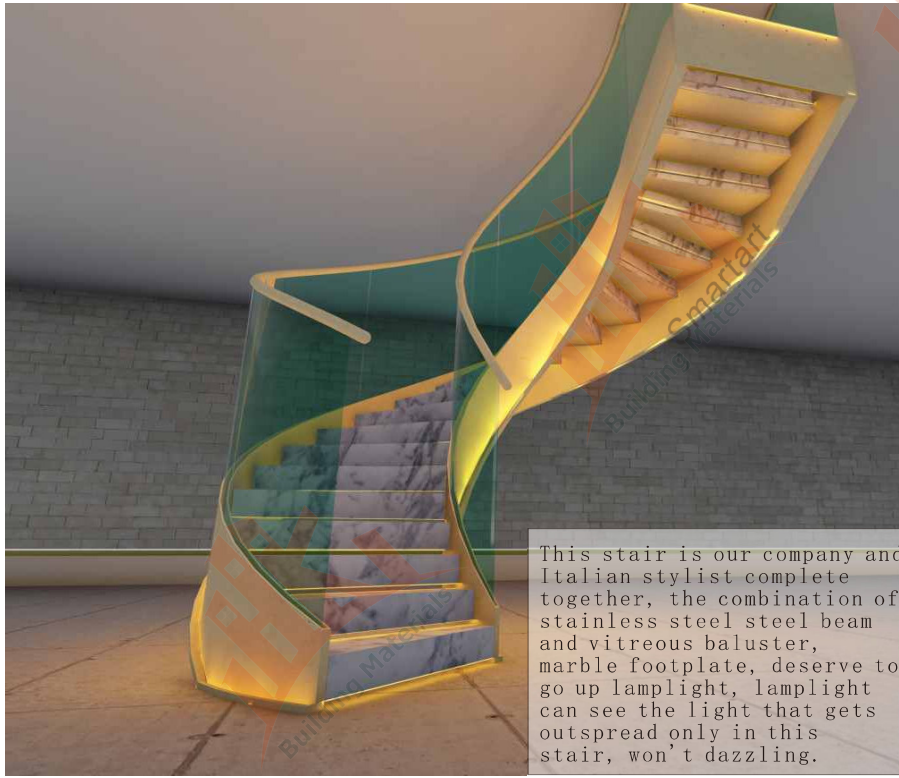




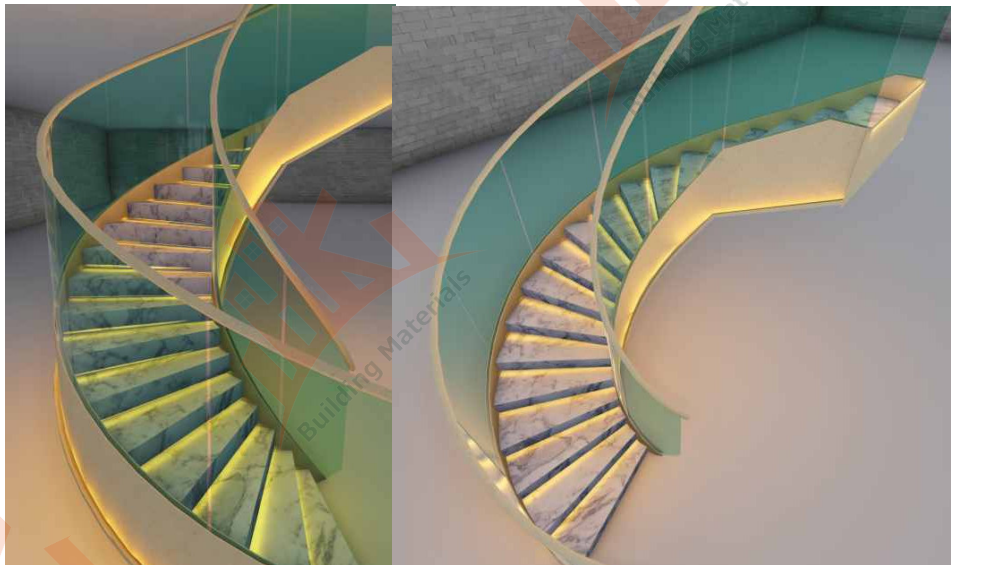
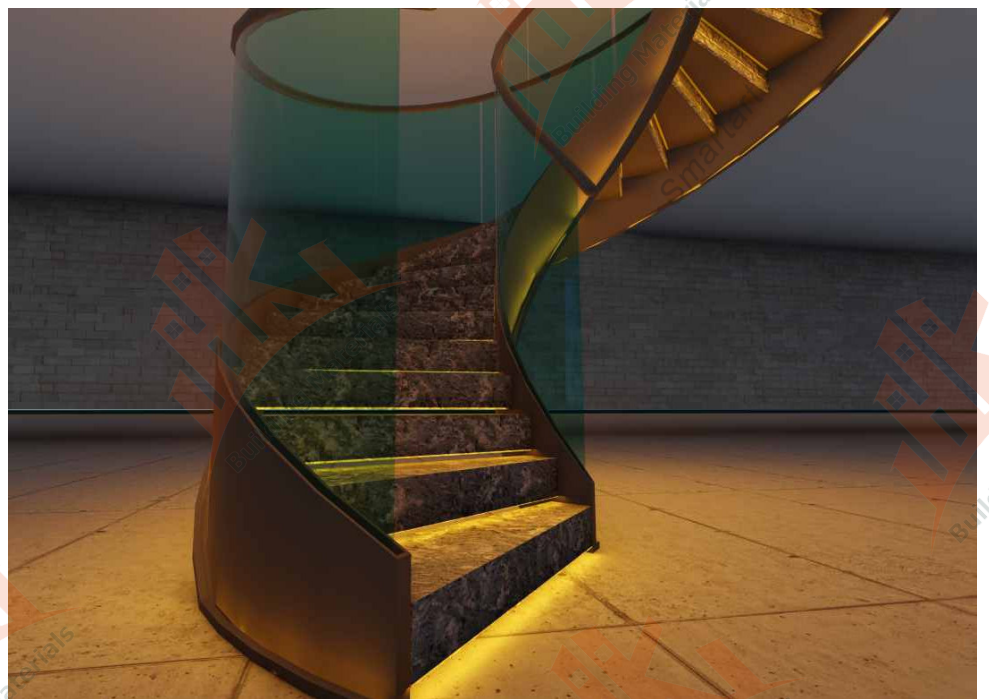
The special place of this stair is to wrap up the traditional steel structure stair with wooden board, which not only ensures the overall force of the stair, but also strengthens the appearance of the beautiful, and the effect of LED lights makes the product rich in a higher level.

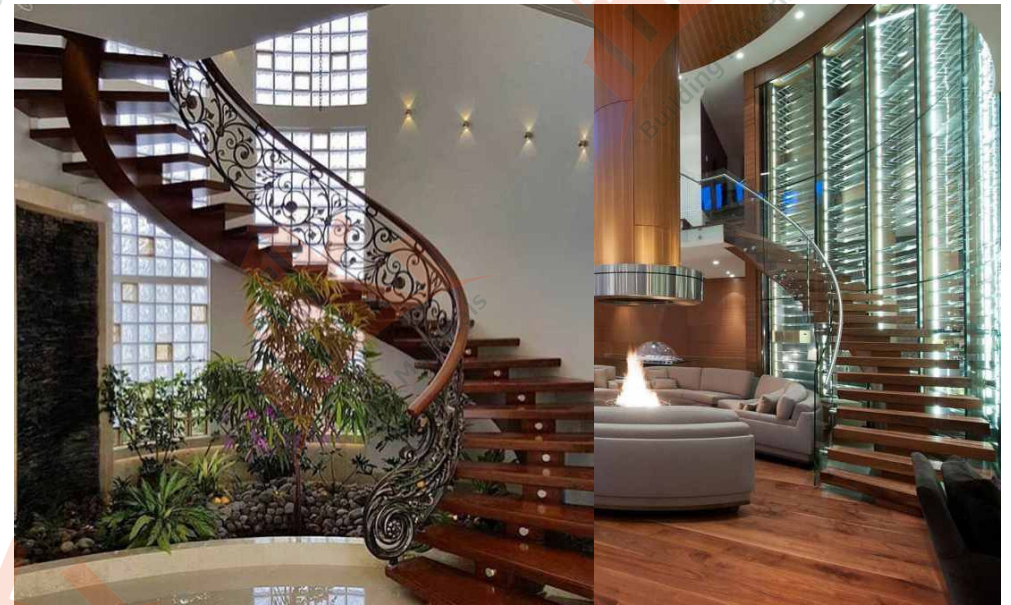
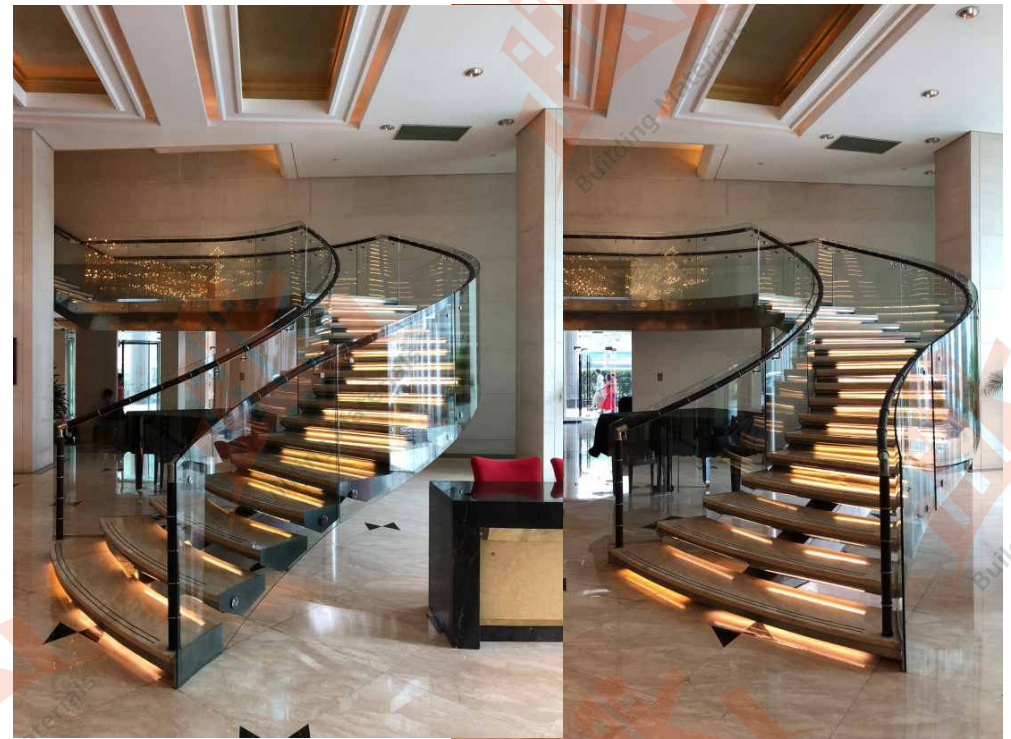


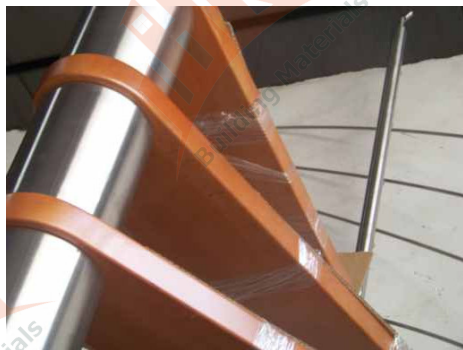
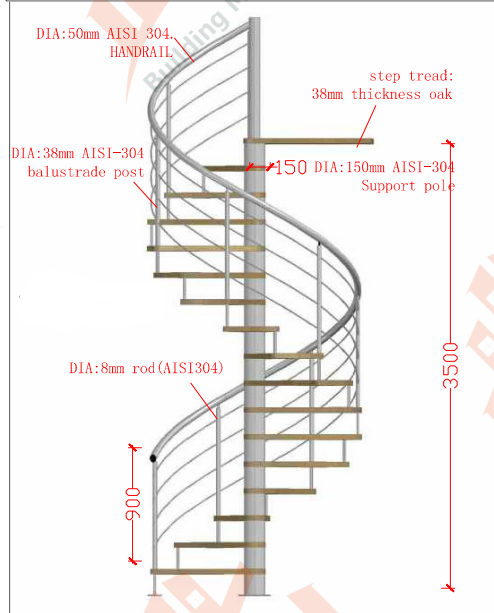
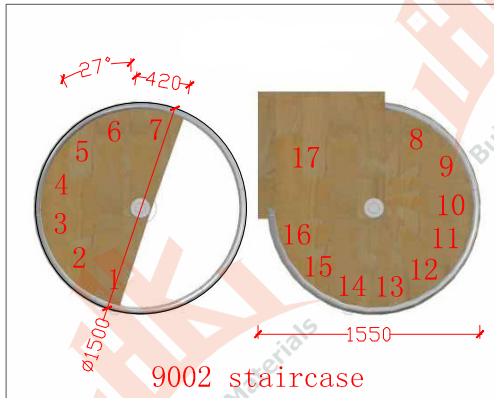




This stair is our company and Italian stylist complete together, the combination of stainless steel steel beam and vitreous baluster, marble footplate, deserve to go up lamplight, lamplight can see the light that gets outspread only in this stair, won't dazzling.







Component	Alternative Specification	Material	Surface Finish
Staircase Stringer	8mm;10mm,12mm	Mild steel; s.s.304; s.s.316;	Powder coating; Satin finish; Mirror Polish
Center post	Dia.159mm	s.s.304; s.s.316;	Satin finish; Mirror Polish
glass steps	15+15 mm; 10+10+10 mm; 12+12+12 mm	Glass Steps	Clear; Frosted;
Wood Steps	38mm; 50mm; 60mm 70mm; 80mm	Oak or beech	Painting
railing	Handrail ;dia.50mm Railing: dia 8mm	Stainless steel	Satin finish; Mirror Polish





FOSHAN HK BUILDING MATERIAL COMPANY

Mobile:0086 15918090620

Tel: 0757-28821990

Email: cocoqiu1987@126.com

Whatsapp:+86 15918090620

Wechat:+86 15918090620

Website:www.hkbuildingmaterial.com